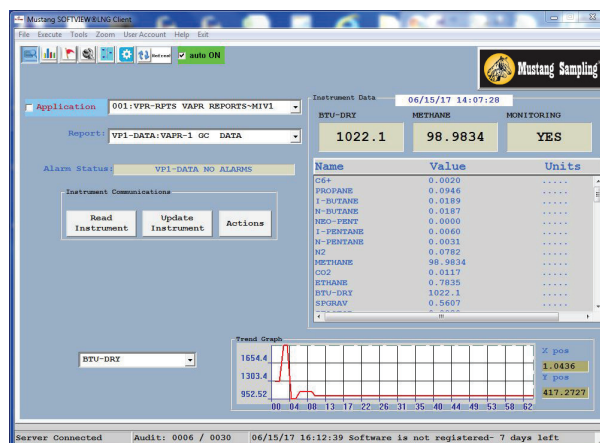




Mustang Sampling[®]

Softview[®] LNG Monitor Software

SoftView LNG Monitor Software is a suite of programs used to interface locally and remotely to the wide array of smart Mustang Sampling instrumentation. These programs include SoftView[®] Lite and SoftView[®] PLUS for standard data acquisition interface to the instruments and SoftView[®] LNG used to monitor and record LNG custody transfer events.



SoftView LNG APPLICATION

SoftView LNG supports auto polling of the vaporizer heater controllers and associated gas chromatographs. Acquired data is optionally checked for alarm status and recorded during an LNG transfer. User adjustment of key instrument configuration parameters, e.g. set-point control of the heater and flow controller, is also supported. The end of transfer event produces a transfer ticket containing average composition and vaporizer data recorded during the transfer.

LNG transfer data recorded during the transfer can be exported for review and analysis with programs such as MS Excel.



FEATURES

- Real time monitoring and history logging & trending of vaporizer and GC data during the LNG load/offload
- New Windows GUI Client to simplify User Interface
- Modbus TCP protocol driver for instrument client interface and server interface to DCS/SCADA System
- Concurrent Interface to up to 5 Vaporizers and Multiple GC Streams
- RS232, RS485, or IP Interface to Vaporizers for Monitoring and data recording
- "Station Network" feature for user review and analysis of latest station point data and point alarm status
- Can define Alarm Limits and measurement ranges for Station Points

BENEFITS

- Plant DCS/SCADA Operator can optionally access SoftView[®] PLUS and SoftView[®] LNG acquired data from DCS or SCADA System via the Modbus TCP or Serial Modbus Server interface
- Compatible with Windows XP, 7, 8, or 10

SoftView Plus APPLICATION

SoftView PLUS supports demand and auto polling of smart Mustang Sampling instruments and supported gas chromatographs. Acquired data is optionally checked for alarm status and recorded in history logs for review and reporting. User adjustment of key instrument configuration parameters, e.g. set-point control of the heater and flow controller, is also supported.

Acquired recorded data can be exported for review and analysis with programs such as MS Excel.

Special features such as the calculation of methane number from the gas compositions is also supported.

FEATURES

- Real time monitoring, data logging & trending of acquired instrument data.
- New Windows GUI Client to simplify User Interface
- Concurrent interface to 10 (PLUS) or 20 (PLUS+) pre-installed instruments.
- Serial Modbus interface or Modbus TCP protocol interface to instruments.
- "Station Network" feature for user review and analysis of latest station point data and point alarm status.
- Can define Alarm Limits and measurement ranges for Station Points.

BENEFITS

- Compatible with Windows XP, 7, 8, or 10

Analytically Accurate®
TECHNOLOGY

About Mustang Sampling

Mustang Sampling, LLC is the innovator of Analytically Accurate® solutions within sample conditioning systems. We provide custom solutions of products and services globally to the Natural Gas, Natural Gas Liquids (NGL), and Liquefied Natural Gas (LNG) industries. Mustang Sampling continues to pioneer integrated control systems, allowing our customers to maintain phase stability from sample extraction at the source through sample analysis. Our products are continuously improved and subjected to the highest quality standards which provides our customers with the best sample conditioning solutions.

Mustang Sampling, LLC
43 Ritmore Glen
Ravenswood, WV 26164
P: +1 304 273 5357
F: +1 304 273 2531

info@MustangSampling.com
www.MustangSampling.com

Copyright © 2017 Mustang Sampling.
All rights reserved.
Mustang Sampling®, SoftView® and Analytically Accurate® are registered trademarks of Mustang Sampling, LLC.

No part of this publication may be reproduced in any material form without the written permission of Mustang Sampling, LLC.

MS-CSSVM.v3-EN-P November 2017
Supersedes: MS-CSSVM.v2-EN-P