



Mustang Sampling[®]

Mustang Certicollar[®] Mounting Brackets

The Mustang Certicollar[®] Mounting Brackets act as a companion to the Mustang Pony[®] Probe Enclosure, fitting over various types of probes and probe regulators. Mustang Certicollar mounting brackets aid in the mounting of an enclosure onto the pipeline.



APPLICATION

Mustang Certicollar mounting brackets are available in a variety of designs including threaded, non-threaded, or strap-on, dependent on the installation.

As a part of the Mustang CertiSeries™ line of products, the Mustang Certicollar mounting bracket line offers multiple options for your specific needs including selections for non-removable housing and probes, and limited spaces.



Natural Gas



LNG



NGL



Bio-Gas

FEATURES

- Available in various outer diameters
- Threaded and non-threaded options
- Strap & 2-piece plate and collars

BENEFITS

- Allows mounting of the enclosure onto a pipe
- Various options allow use with threaded or non-threaded probe

PRODUCT SPECIFICATIONS

KT-Nut™ Mounting Brackets

KT-Nut Threaded Base Adaptor



Applications	GPR & GP2 Probe w/ existing housing removable during installation
Available Sizes	3/4", 1"
Wetted Materials	Machined parts: 316 SS

KT-Nut Non-Threaded Base Adaptor



Applications	GPR & GP2 Probe w/ existing housing not removable during installation
Available Sizes	3/4", 1"
Wetted Materials	Machined parts: 316 SS

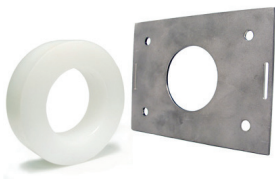
KT-Nut 702 Threaded Base Adaptor



Applications	702 Probe w/ existing housing removable during installation
Available Sizes	1"
Wetted Materials	Machined parts: 316 SS

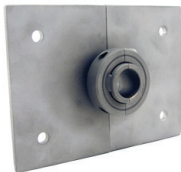
Certiplate™ Mounting Brackets

Certiplate 1-Piece Base Plate w/ Vinyl Cap



Applications	GPiL Probe and/or locations with strap-on needs
Available Sizes	3/4", 1", 2"
Wetted Materials	Machined parts: 316 SS

Certiplate 2-Piece Base Plate & Collar



Applications	Existing non-removable probes
Available Sizes	5/8", 3/4", 1"
Wetted Materials	Machined parts: 316 SS

Analytically Accurate®
TECHNOLOGY

About Mustang Sampling

Mustang Sampling, LLC is the innovator of Analytically Accurate® solutions within sample conditioning systems. We provide custom solutions of products and services globally to the Natural Gas, Natural Gas Liquids (NGL), and Liquefied Natural Gas (LNG) industries. Mustang Sampling continues to pioneer integrated control systems, allowing our customers to maintain phase stability from sample extraction at the source through sample analysis. Our products are continuously improved and subjected to the highest quality standards which provides our customers with the best sample conditioning solutions.

Mustang Sampling, LLC
43 Ritmore Glen
Ravenswood, WV 26164
P: +1 304 273 5357
F: +1 304 273 2531

info@MustangSampling.com
www.MustangSampling.com

Copyright © 2017 Mustang Sampling. All rights reserved. Mustang Sampling®, Certicollar®, Pony®, Certiprobe® and Analytically Accurate® are registered trademarks of Mustang Sampling, LLC. Genie® is a registered trademark of A+ Corporation.

No part of this publication may be reproduced in any material form without the written permission of Mustang Sampling, LLC.

MS-CSMCC.v4-EN-P November 2017
Supersedes: MS-CSMCC.v3-EN-P