



Mustang Certicollar[®] Mounting Brackets

MCC

The Mustang Certicollar[®] mounting brackets (MCC) act as a companion to the Mustang Pony[®] probe enclosure, fitting over various types of probes and probe regulators. The MCC aids in the mounting of the enclosure onto the pipeline.



APPLICATION

MCC mounting brackets are available in a variety of designs including threaded, non-threaded, or strap-on, dependent on the installation.

With the wide variety available, the Mustang Certicollar mounting bracket line will have the appropriate option for your specific needs including selections for non-removable housing and probes, and limited spaces.



Natural Gas



LNG



NGL



Bio-Gas

FEATURES

- Available in various outer diameters
- Threaded and non-threaded options
- Strap & 2-piece plate and collars

BENEFITS

- Allows mounting of the enclosure onto a pipe
- Various options allow use with threaded or non-threaded probe

PRODUCT SPECIFICATIONS

Threaded Base KT-Nut



Applications	GPR & GP2 Probe w/ existing housing removable during installation
Available Sizes	3/4", 1"
Wetted Materials	Machined parts: 316 SS

Non-Threaded Base KT-Nut



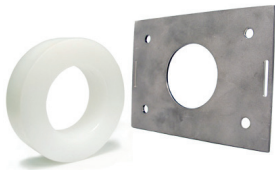
Applications	GPR & GP2 Probe w/ existing housing not removable during installation
Available Sizes	3/4", 1"
Wetted Materials	Machined parts: 316 SS

702 Threaded Base KT-Nut



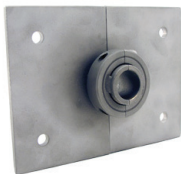
Applications	702 Probe w/ existing housing removable during installation
Available Sizes	1"
Wetted Materials	Machined parts: 316 SS

1-Piece Base Plate w/ Vinyl Cap KT-Nut



Applications	GPiL Probe and/or locations with strap-on needs
Available Sizes	3/4", 1", 2"
Wetted Materials	Machined parts: 316 SS

2-Piece Base Plate & Collar KT-Nut



Applications	Existing non-removable probes
Available Sizes	5/8", 3/4", 1"
Wetted Materials	Machined parts: 316 SS

Analytically Accurate®
TECHNOLOGY

About Mustang Sampling

Mustang Sampling, LLC is the innovator of Analytically Accurate® solutions within sample conditioning systems. We provide custom solutions of products and services globally to the Natural Gas, Natural Gas Liquids (NGL), and Liquefied Natural Gas (LNG) industries. Mustang Sampling continues to pioneer integrated control systems, allowing our customers to maintain phase stability from sample extraction at the pipeline through sample analysis. Our products are continuously improved and subjected to the highest quality standards which provides our customers with the best sample conditioning solutions.

Mustang Sampling, LLC
43 Ritmore Glen
Ravenswood, WV 26164
P: +1 304 273 5357
F: +1 304 273 2531

info@MustangSampling.com
www.MustangSampling.com

Copyright © 2017 Mustang Sampling. All rights reserved. Mustang Sampling®, Certicollar®, Pony®, Certiprobe® and Analytically Accurate® are registered trademarks of Mustang Sampling, LLC. Genie® is a registered trademark of A+ Corporation.

No part of this publication may be reproduced in any material form without the written permission of Mustang Sampling, LLC.

MS-CSMCC.v3-EN-P July 2017
Supersedes: MSB-MCC VOL. 2.4